



FTG CF85 SERIES

6 X 2 TRACTOR

Engine: 380/430hp
 XE 12.60 litre
Tyres: 295/80R22.5
G.V.W. GB: 23.40 tonnes
Plated Front: 7100 kg
Plated Rear: 18600 kg
G.C.M. GB: 44 tonnes



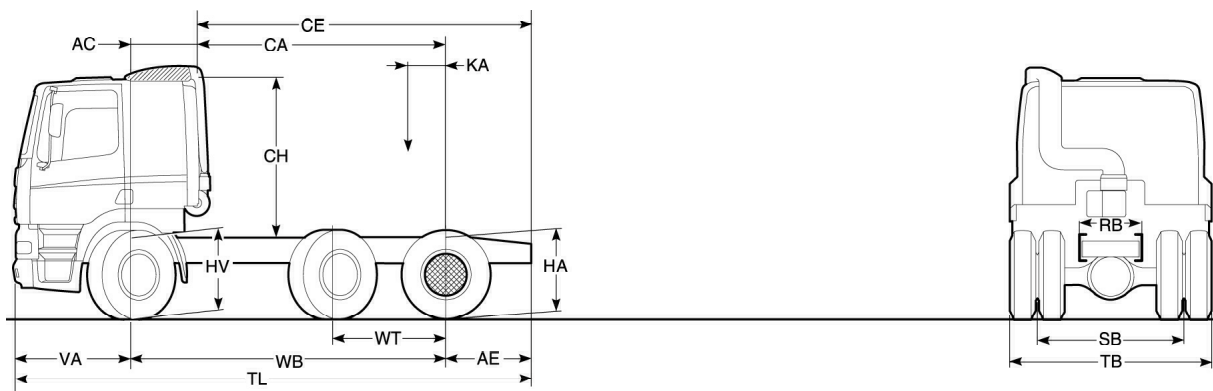
	Wheelbase - AE		Chassis and Cab Weights			Gross Carrying Capacity			Variable Dimensions				
	W/B	AE	Front	Rear	Total	Front	Rear	Total	AC	WT	CH ¹	TL	HA ²
Day cab	3.90	.96	4460	2960	7420	2640	15640	15880	.39	1.32	1.96	6.24	.96
Sleeper Cab	3.90	.96	4600	2960	7560	2500	15640	15740	.82	1.32	1.96	6.24	.96
Space Cab	3.90	.96	4730	2960	7690	2370	15640	15610	.82	1.32	2.64	6.24	.96

Fixed dimensions VA: 1.38 HV: ³ .92 RB: .79 SB: 1.82 TB: 2.49

Chassis and Cab Weight calculated with: Standard specification items only with full tank of fuel.

Front axle can be plated to 7500kg with appropriate tyres

THIS SPECIFICATION SHEET IS FOR PROVISIONAL PURPOSES ONLY!



- 1) CH is to roof hatch. Add 14cm for top of air intake
- 2) Laden height at centre of rear axle
- 3) Laden height at centre of front axle

Cab - Exterior

CF steel sleeper cab with hydraulic tilt mechanism
Aerodynamic design
Laminated windscreen
Standard equipment includes:
Combi-lights in bumper(fog/spots)
Tinted windscreen
Electrically heated wide angle and rear view mirrors
Kerb view mirror
Manual roof hatch
Spray suppression equipment
Engine immobiliser
5 year corrosion warranty*
2 year paint warranty*
* Subject to terms and conditions

Cab - Interior

Ergonomic aesthetically designed cab interior
Digital Information Panel in English and Dutch
Night heater
Cruise control
Drivers air and co-drivers rigid seat with headrests and integral seat belts
Phone prepared
Co-drivers electrically operated window
Co-drivers electrically operated door lock
Storage on engine tunnel and behind seats
Wrap round blue and black dashboard
24/12 volt converter of 10 Amp capacity

Suspension

Front axle:
Steel maintenance-free parabolic springs with shock absorbers and anti-roll bar

Rear bogie:
ECAS air suspension with shock absorbers and anti-roll bar

Front axle:
DAF 152N "I" section rigid beam
Design gross 7500kg

Rear bogie:
DAF 150N "I" section rigid beam positively steered
Lift facility as standard
DAF 1347 single reduction drive axle with mechanical diff lock
Design gross 18600kg (7.1/11.5 split)

Wheels and Tyres

Front and second steer axle 8.25 x 22.5 10 stud wheels with 295/80R22.5 tyres with highway tread

Rear axle 8.25 x 22.5 10 stud wheels with 295/80R22.5 tyres with traction tread

Engine

DAF XEC1 12.60 litre Euro 3 UPEC electronically controlled engine

Max power 381/428hp (280/315kW) at 1900 rpm

Max torque 1750/1950Nm at 1000-1500 rpm

Gearbox

ZF 16S181
16 speed gearbox with range change and splitter

1st 16.41:1 Top 1.00:1 Reverse 15.36:1

Clutch

Single plate clutch with extended life time and wear indicator

Performance

	Rear axle ratio	Governed engine speed	Max geared speed	Max. restart gradient
44 tonnes	3.07:1	1900	75	30%+*
	3.31:1	1900	68	30%+*

*Gradeability may be limited by tyre adhesion.

Brake System

DAF disc brakes all round controlled electronically (EBS and ABS) automatic adjustment. Exhaust brake
EBS/ABS trailer cable fitted as standard

Frame

Completely flat topped frame of riveted and bolted construction

Chassis member dimensions 260mm x 75mm x 7mm
Chassis width rear: 790mm
Bumper: steel construction
Front towing facility: chassis located x 2

Steering

Hydraulic power assisted

Turning circle (kerb to kerb)
3.90m WB 14.90m

Electrical Equipment

Fully coded 24 volt CAN based system and hard wiring
35/80 amp alternator
2 x 175 Ah batteries (2 x 140 Ah if no night heater fitted)
Rear light cluster includes:
rearlights, stop lights, indicators, reverse and fog lights, reflectors
end outline markers and side marker lights.

General Equipment

Single 430 litre steel fuel tank
Lockable fuel cap
Silver wheels
Cab tilt bar and wheelbrace
Rear coupling lamp and catwalk

Optional Equipment

Thatcham immobiliser H1 or H2
Rear and side windows
Corner air deflectors
Servoshift
Air/luxury/super luxury seats
Audio equipment
Dual electric window winders
Central door locking
Wooden facia
Air conditioning
Aluminium wheels
Stud protection rings
Various fuel tanks
Various batteries

Space cab:

Appointment as per sleeper cab but includes: overhead storage and increased underbunk storage, smoked sun visor and electric roof hatch

Day cab:

excludes night heater, includes storage behind seats x 2

The availability and specification of this vehicle may differ per country.
For further information please contact the DAF organisation.

Subject to modification without prior notice