

Product specification



truck chassis 6x4

series

FAT CF85.340 FAT CF85.380

FAT CF85.430 FAT CF85.480

GVW max. 33000 kg

Engine

XE 250 / 280 / 315 / 355

Gross Combination Weight¹⁾

Euro 3 version
up to 60 tonnes

Weights in kilograms

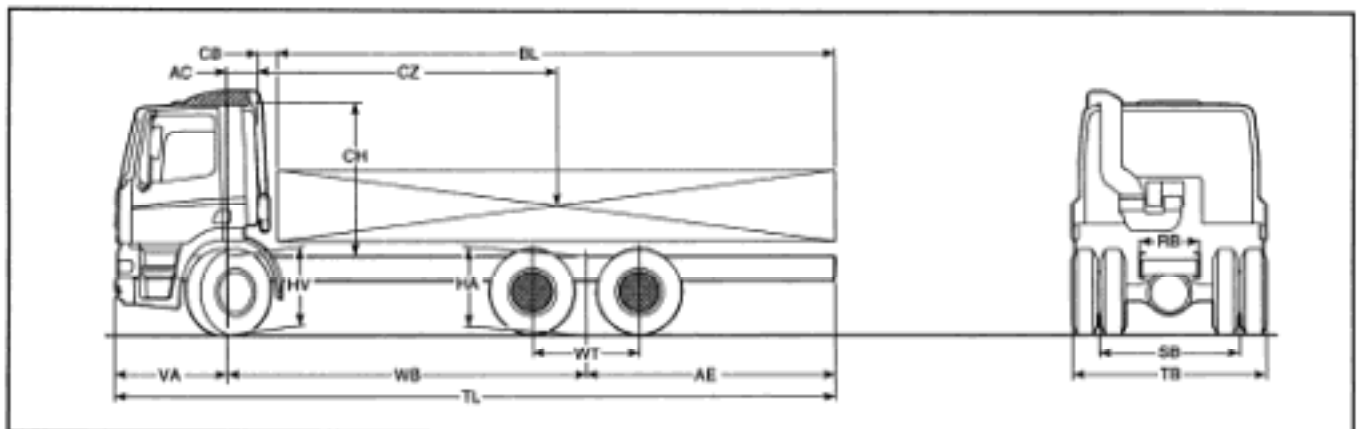
Model	Gross Vehicle Weight ²⁾			Chassis and Cab Weight			Gross Carrying Capacity		
	front	rear	total	front	rear	total	front	rear	total
Day Cab									
FAT CF85...-405	7100	21000	27000	4075	4220	8295	3025	16780	18705
FAT CF85...-455	7100	21000	27000	4100	4250	8350	3000	16750	18650
FAT CF85...-500	7100	21000	27000	4125	4330	8455	2975	16670	18545
FAT CF85...-555	7100	21000	27000	4150	4415	8565	2950	16585	18435

Chassis and Cab Weight calculated with: F 230 tilt Day Cab with 4 coil spring suspension, XE 315 engine, 2x 175 Ah batteries, 16 S 181 gearbox, HR 1355T tandem axle with lockable differential, 156N front axle, 310 mm chassis height, parabolic type springs at front, trapezium springs at rear, shock absorbers and stabilizer at front, 340-litre steel fuel tank (empty), 295/80 R 22.5 tyres, drawbar cross member, spare wheel and carrier. All further equipment mentioned as standard.

Note: Chassis/cab weight with Sleeper Cab +110 kg, with Space Cab +160 kg. Plus and minus weights depending on cab and vehicle specification.

Dimensions in metres

WB	TL	VA	AE	AC	CB ³⁾	BL ⁴⁾	CH ⁵⁾	HV ⁶⁾	HA ⁷⁾	WT	RB	SB	TB
Day Cab													
4.05	8.08	1.38	2.65	0.39	0.16	6.15	1.91	1.04	1.06	1.40	0.79	1.82	2.49
4.55	8.83	1.38	2.90	0.39	0.16	6.90	1.91	1.04	1.06	1.40	0.79	1.82	2.49
5.00	9.58	1.38	3.20	0.39	0.16	7.65	1.91	1.04	1.06	1.40	0.79	1.82	2.49
5.55	10.68	1.38	3.75	0.39	0.16	8.75	1.91	1.04	1.06	1.40	0.79	1.82	2.49



- 1) Restrictions due to legal regulations and area of application as well as driveline specification have not been taken into account.
- 2) Front axle load based on tyre load index (7100 / 12600 kg).
- 3) CB with cyclonic filter: 0.20 m, with vertical tailpipe: 0.24 m.
- 4) BL dimensions calculated on chassis dimensions. For exact body lengths refer to TOPEC calculation.
- 5) CH with air intake on cab roof: +0.14 m, with Space Cab: +0.68 m.
- 6) Laden height at centre of front axle.
- 7) Laden height at centre of rear axle.

CAB EXTERIOR

F230 Day Cab with 4 coil spring suspension and hydraulic tilting gear. Tilting angle 57.5. Fixed, illuminated cab steps. Manually controlled roof hatch with reinforced glass. Heated main and wide angle mirrors. Steel front bumper with foot hold.

Optional:

Sleeper Cab.	Space Cab.
Headlamp levelling device.	Tinted glass.
Aluminium roof hatch.	Non-translucent roof hatch.
Permanent driving lights.	External sun visor.
Side window on Sleeper Cab	Elec. adjustable main mirrors.
Vehicle immobiliser and alarm.	Rear window.
Spot lights.	Hazard beacon lights.

AERODYNAMICS

Optional:

Adjustable roof spoiler.	Side collars.
Corner air deflectors.	

COLOURS

Choice of 21 basic solid cab colours and 3 chassis colours. Various non-standard and metallic cab colours.

CAB INTERIOR

Completely equipped instrument panel. Mechanical gear shift system. Adjustable steering column. Adjustable air suspended driver seat and fixed co-driver seat with head restraint. Various storage facilities.

Sleeper cab with 1 bunk and underneath 2 large storage boxes, at left-hand side airtight, accessible from the outside. LHD hydraulic power steering, 4 spokes, soft grip steering wheel.

Optional:

Various driver/co-driver seats.	Integrated 3-point safety belt.
3rd seat (Day Cab).	2nd bunk on Sleeper Cab and Space Cab.
Elec. window opener.	Auxiliary heater.
Speed limiter (85 or 120 km/h).	Cruise control.
RH-drive (depending on WB/AE).	Air-conditioning.
Audio equipment.	Leather finish steering wheel.
Mechanical or electrical remote controlled door lock.	Wood structure dashboard finish.

SUSPENSION AND AXLE LOAD

* Front axle type	156N
Max. design load	7500 kg
Straight beam axle. Stub axle with needle bearings.	
Optional: Front axle type	186N (9000 kg).
* Rear axle type	HR 1355 T
Max. design load	26000 kg
Double driven tandem axle with hub reduction and lockable inter-axle and axle differentials.	

* Suspension front: parabolic type leaf springs with shackled ends at rear. Shock absorbers and stabilizer.

* Suspension rear: trapezium type leaf springs. Spring travel limiting cables. Axle location with 8 reaction rods.

WHEELS AND TYRES

22.5" (10 stud) steel disc wheels, with 295/80 R 22.5 tubeless radial type tyres at front and rear. Twin wheels at rear.

Optional:

Various types of wheels and tyres resulting in different axle loads.	Aluminium disc wheels.
	Wheel protection rings.
	Spare wheel with tyre.

SAFETY REGULATIONS

Optional:

Main switch.

PTO'S

Optional:

Gearbox PTO's and preparation for remote control. Engine PTO, with or without control. Front PTO V-belt preparation.

BRAKE SYSTEM

Dual-circuit air operated disk brakes at front and drum brakes at rear, wear indicators at front and rear. Asbestos free brake pads. Pneumatically operated exhaust brake. Parking brake

by means of spring brake actuators at front and second rear axle.

Optional:

ABS.	Intarder.
DAF engine brake (DEB).	

ELECTRICAL POWER SUPPLY

Voltage	24 V
Alternator	80 A
Batteries	2x 175 Ah
Optional:	
225 Ah batteries.	2x 140 Ah batteries (RHD).
100 A alternator.	

DRIVELINE

*Engine	6 cylinder, 24 valves	
Piston displacement	12.6 litre	
Compression ratio	17.4 to 1	
Governor	electronically controlled	
Type	Maximum output	Maximum torque
	kW hp rpm	Nm rpm
XE 250 C	250 340 1900	1600 1000 - 1500
XE 280 C	280 381 1900	1750 1000 - 1500
XE 315 C	315 428 1900	1950 1000 - 1500
XE 355 C	355 483 1900	2100 1050 - 1500

Maximum output and torque according ECE R24-03 (ISO 1585).

* Clutch: Single type, pulled operation, asbestos free, dry plate hydraulically operated and pneumatically assisted.

Diameter 430 mm

* Gearbox: 8 S 181, 4-speed main gearbox with range-change group giving 8 speeds.

Gearbox: 16 S 151/181/221, 4-speed main gearbox with splitter group and range-change group giving 16 speeds.

* Gearbox / Engine

	XE 250	XE 280	XE 315	XE 355
16 S 151 (13.86-0.84)	x	-	-	-
8 S 181 (13.80-1.00)	x	x	x	-
16 S 181 (13.80-0.84)	-	x	x	-
16 S 221 (13.86-0.84)	-	-	-	x

* Theoretical max. speed in km/h at 1900 rpm with 295/80 R 22.5 tyres.

Ratios, HR 1355T tandem axle

4.05	4.49	4.88	5.48	6.16
------	------	------	------	------

Direct drive

90	81	74	66	59
----	----	----	----	----

Over drive

127	115	106	94	84
-----	-----	-----	----	----

Max. speed depending on gear ratios, tyres, superstructure, GCW and operation conditions.

Lockable differential.

CHASSIS

Completely flat-topped chassis frame. Riveted and bolted construction of channel-section main frame members and cross members. 340-litre steel fuel tank. Box type exhaust silencer at right with tailpipe pointing to the middle of the chassis.

Side marker lamps.

Dimensions main frame

310x75x7 mm with inner reinforcement

Optional:

200, 270, 450, 500 or 600 l steel/alu. fuel tank (depending on WB/AE).

* Turning circle

WB 4.05 m

WB 4.55 m

WB 5.00 m

WB 5.55 m

Spare wheel carrier with winch.

Tailpipe pointing to the right or vertical.

between kerbs between walls

14.00 m 15.45 m

15.30 m 16.75 m

16.45 m 17.95 m

17.90 m 19.40 m

DRAWBAR / TRAILER EQUIPMENT

Drawbar cross member (D=130) for mounting of automatic trailer coupling. Manoeuvring towing/pushing pin at front.

Optional:

Drawbar cross member D=190.

Closing cross member.

Two 7-pole trailer connectors for light and accessories and 5-pole connector for ABS.

Automatic coupling D=130 or 190.

ABS wiring cable.

Pneumatic trailer connect. 2-line.

Two 7-pole wiring cables.

LEGAL ASPECTS

Exhaust emission according to Euro 3.

EEC certified noise encapsulation.

Optional:

EC steering certificate.

APPLICATION CONDITIONS

Raised air intake on top of the roof. Set of tools. Heated air dryer.

Optional:

Air intake behind the cab.

Acoustic reversing signal.

Cyclonic type air filter.

Moisture separator.

SERVICE AND MAINTENANCE

One year driveline component warranty.

Optional:

DAF MultiSupport package.

One year full vehicle warranty.

Customised R&M contract.

The availability and specification of this vehicle may differ per country. For further information please contact the DAF organisation.

Subject to modification without prior notice

DAF Trucks N.V., The Netherlands