

Product specification



truck chassis 8x4, RHD

series
FAD CF85.340 FAD CF85.380

GVW max. 32000 kg

Engine XE 250 / XE 280
Gross Combination Weight¹⁾ Euro 3 version
solo application

Weights in kilograms

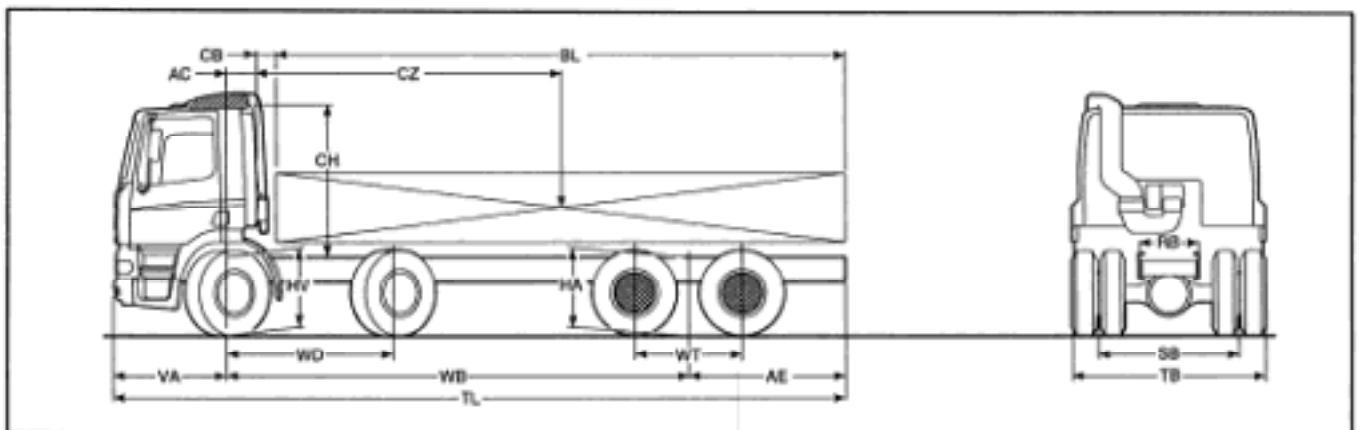
Model	Gross Vehicle Weight ²⁾			Chassis and Cab Weight			Gross Carrying Capacity		
	front	rear	total	front	rear	total	front	rear	total
Day Cab									
FAD CF85 - RHD-570	14200	19000	32000	5805	3050	8855	8395	15950	23145
FAD CF85 - RHD-570	14200	19000	32000	5825	2940	8765	8375	16060	23235
FAD CF85 - RHD-640	14200	19000	32000	5740	3185	8925	8460	15815	23075
FAD CF85 - RHD-640	14200	19000	32000	5760	3075	8835	8440	15925	23165
FAD CF85 - RHD-640	14200	19000	32000	5720	3140	8860	8480	15860	23140
FAD CF85 - RHD-710	14200	19000	32000	5740	3290	9030	8460	15710	22970

Chassis and Cab Weight calculated with: F 230 tilt Day Cab with 4 coil spring suspension, XE 250 engine, 2x 140 Ah batteries, 8 S 151 gearbox, SR 1132T tandem axle with lockable differential, 2x 156N front axles, chassis 310x75x6 mm, parabolic type springs at front, trapezium springs at rear, shock absorbers and stabilizer at front, 340-litre aluminium fuel tank (empty), 295/80 R 22.5 tyres, drawbar cross member. All further equipment mentioned as standard.

Note: Chassis/cab weight with Sleeper Cab + 110 kg, with Space Cab + 180 kg. Plus and minus weights depending on cab and vehicle specification.

Dimensions in metres

WB	TL	VA	AE	AC	CB ³⁾	BL ⁴⁾	CH ⁵⁾	HV ⁶⁾	HA ⁷⁾	WD	WT	FB	SB	TB
Day Cab														
5.70	8.61	1.38	1.53	0.39	0.16	6.65	1.91	1.09	1.06	2.05	1.40	0.79	1.82	2.49
5.70	8.73	1.38	1.65	0.39	0.16	6.80	1.91	1.09	1.06	2.05	1.40	0.79	1.82	2.49
6.40	9.31	1.38	1.53	0.39	0.16	7.35	1.91	1.09	1.06	2.05	1.40	0.79	1.82	2.49
6.40	9.43	1.38	1.65	0.39	0.16	7.50	1.91	1.09	1.06	2.05	1.40	0.79	1.82	2.49
6.40	9.93	1.38	2.15	0.39	0.16	8.00	1.91	1.09	1.06	2.05	1.40	0.79	1.82	2.49
7.10	10.63	1.38	2.15	0.39	0.16	8.70	1.91	1.09	1.06	2.05	1.40	0.79	1.82	2.49



- 1) Restrictions due to legal regulations and area of application as well as driveline specification have not been taken into account.
- 2) Front axle load based on tyre load index (7100 / 12600 kg).
- 3) CB with cyclonic filter: 0.20 m, with vertical tailpipe: 0.24 m.
- 4) BL dimensions calculated on chassis dimensions. For exact body lengths refer to TOPEC calculation.
- 5) CH with air intake on cab roof: +0.14 m, with Space Cab: +0.68 m.
- 6) Laden height at centre of front axle.
- 7) Laden height at centre of rear axle.

CAB EXTERIOR

F230 Day Cab with 4 coil spring suspension and hydraulic tilting gear. Tilting angle 57.5. Fixed, illuminated cab steps. Manually controlled roof hatch with reinforced glass. Heated main and wide angle mirrors. Steel front bumper with foot hold.

Optional:

Sleeper Cab.	Space Cab.
Headlamp levelling device.	Tinted glass.
Aluminium roof hatch.	Non-translucent roof hatch.
Permanent driving lights.	External sun visor.
Side window on Sleeper Cab	Elec. adjustable main mirrors.
Vehicle immobiliser and alarm.	Rear window.
Spot lights.	Hazard beacon lights.

AERODYNAMICS

Optional:

Adjustable roof spoiler.	Side collars.
Corner air deflectors.	

COLOURS

Choice of 21 basic solid cab colours and 3 chassis colours. Various non-standard and metallic cab colours.

CAB INTERIOR

Completely equipped instrument panel. Mechanical gear shift system. Adjustable steering column. Adjustable air suspended driver seat and fixed co-driver seat with head restraint. Various storage facilities.

Sleeper cab with 1 bunk and underneath 2 large storage boxes, at left-hand side airtight, accessible from the outside. RHD hydraulic power steering, 4 spoke, soft grip steering wheel.

Optional:

Various driver/co-driver seats.	Integrated 3-point safety belt.
3rd seat (Day Cab).	2nd bunk on Sleeper Cab and Space Cab.
Elec. window opener.	Auxiliary heater.
Speed limiter (85 or 120 km/h).	Cruise control.
Wood structure dashboard finish.	Air-conditioning.
Audio equipment.	Leather finish steering wheel.
Mechanical or electrical remote controlled door lock.	

SUSPENSION AND AXLE LOAD

* Front axle type	2x 156N
Plated axle load	2x 7500 kg
Straight beam axle. Stub axle with needle bearings.	

Optional: Front axle type

* Rear axle type	2x 152N
Max. design load	SR 1132T
	19000 kg

Double driven tandem axle with single reduction and lockable inter-axle and axle differentials.

* Suspension front: parabolic type leaf springs with shackled ends at rear and axle load compensation. Shock absorbers and stabilizer.

* Suspension rear: trapezium type leaf springs. Spring travel limiting cables. Axle location with 8 reaction rods.

WHEELS AND TYRES

22.5" (10 stud) steel disc wheels, with 295/80 R 22.5 tubeless radial type tyres at front and rear. Twin wheels at rear.

Optional:

Various types of wheels and tyres resulting in different axle loads.	Aluminium disc wheels.
	Wheel protection rings.
	Spare wheel with tyre.

SAFETY REGULATIONS

Optional:

Main switch.

PTO'S

Optional:

Gearbox PTO's and preparation for remote control. Engine PTO, with or without control. Front PTO V-belt preparation.

BRAKE SYSTEM

Dual-circuit air operated disk brakes at front and drum brakes at rear, wear indicators at front and rear.

Asbestos free brake pads. Pneumatically operated exhaust brake. Parking brake

by means of spring brake actuators at second front and second rear axle.

Optional:

ABS.	Intarder.
DAF engine brake (DEB).	

ELECTRICAL POWER SUPPLY

Voltage	24 V
Alternator	80 A
Batteries	2x 175 Ah
Optional:	
225 Ah batteries.	2x 140 Ah batteries.
100 A alternator.	

DRIVELINE

*Engine	6 cylinder, 24 valves
Piston displacement	12.6 litre
Compression ratio	17.4 to 1
Governor	electronically controlled

Type	Maximum output			Maximum torque	
	kW	hp	rpm	Nm	rpm
XE 250 C	250	340	1900	1600	1000 - 1500
XE 280 C	280	381	1900	1750	1000 - 1500

Maximum output and torque according ECE R24-03 (ISO 1585).

* Clutch: Single type, pulled operation, asbestos free, dry plate hydraulically operated and pneumatically assisted.

Diameter 430 mm

* Gearbox: 8 S 151, 4-speed main gearbox with range-change group giving 8 speeds.

Gearbox: 16 S 151, 4-speed main gearbox with splitter group and range-change group giving 16 speeds.

* Gearbox / Engine

8 S 151	(13.86-1.00)	XE 250	XE 280
---------	--------------	--------	--------

	(11.59-0.84)	x	-
--	--------------	---	---

16 S 151	(13.86-0.84)	x	x
----------	--------------	---	---

* Theoretical max. speed in km/h at 1900 rpm with 295/80 R 22.5 tyres.

Ratios, SR 1132T tandem axle	3.73	4.10	4.56
------------------------------	------	------	------

Direct drives	97	89	80
---------------	----	----	----

Over drives	116	106	95
-------------	-----	-----	----

Max. speed depending on gear ratios, tyres, superstructure, GCW and operation conditions.

Lockable differential.

CHASSIS

Completely flat-topped chassis frame. Riveted and bolted construction of channel-section main frame members and cross members. 340-litre aluminium fuel tank. Box type exhaust silencer at right with tailpipe pointing to the middle of the chassis.

Side marker lamps.

Dimensions main frame	310x75x6 mm or 310x75x7 mm with inner reinforcement (depending on WB/AE).
-----------------------	---

Optional:

145, 200, 270, 450, 500 or 600 l aluminium fuel tank (depending on WB/AE).

* Turning circle

WB 5.70 m	20.15 m	21.50 m
-----------	---------	---------

WB 6.40 m	22.15 m	23.55 m
-----------	---------	---------

WB 7.10 m	24.20 m	25.60 m
-----------	---------	---------

The availability and specification of this vehicle may differ per country. For further information please contact the DAF organisation.

Subject to modification without prior notice

DAF Trucks N.V., The Netherlands