



FA 85CF SERIES

4 X 2 DRAWBAR

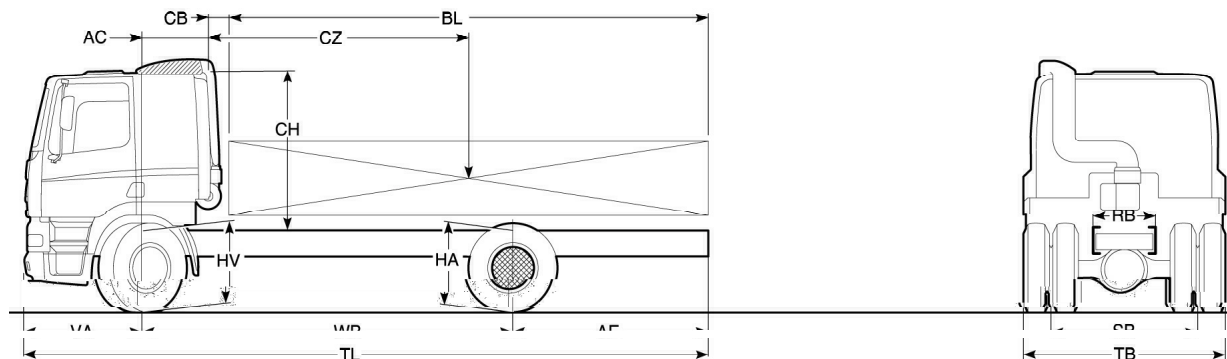
Engine: 380hp
XE 12.60 litre
Tyres: 295/80R22.5
G.V.W. GB: 18 tonnes
Plated Front: 7100 kg
Plated Rear: 11500 kg
G.C.M. GB: 40 tonnes



	Wheelbase - AE		Chassis and Cab Weights			Gross Carrying Capacity			Variable Dimensions						
	W/B	AE	Front	Rear	Total	Front	Rear	Total	AC	CB	CH ¹	BL	TL	HA ²	
Sleeper Cab	4.00	1.70	4530	2060	6590	2570	9440	11410	.82	.15	1.96	4.30	4.73	7.08	.96
	4.20	1.80	4530	2090	6620	2570	9410	11380	.82	.15	1.96	4.61	5.06	7.38	.96
	4.50	1.95	4530	2130	6660	2570	9370	11340	.82	.15	1.96	5.07	5.55	7.83	.96
	4.70	2.05	4530	2140	6670	2570	9360	11330	.82	.15	1.96	5.38	5.88	8.13	.96
	4.90	2.15	4530	2150	6680	2570	9350	11320	.82	.15	1.96	5.69	6.21	8.43	.96
	5.10	2.30	4550	2200	6750	2550	9300	11250	.82	.15	1.91	6.00	6.55	8.78	1.01
	5.40	2.40	4570	2250	6820	2530	9250	11180	.82	.15	1.91	6.48	7.06	9.18	1.01
	5.70	2.65	4550	2270	6820	2550	9230	11180	.82	.15	1.91	6.92	7.54	9.73	1.01
	6.10	2.80	4570	2320	6890	2530	9180	11110	.82	.15	1.91	7.55	8.21	10.28	1.01
	6.60	3.20	4760	2370	7130	2340	9130	10870	.82	.15	1.91	8.50	9.23	11.18	1.01
6.90	3.45	4770	2400	7170	2330	9100	10830	.82	.15	1.91	8.97	9.74	11.73	1.01	
Space Cab	4.00	1.70	4660	2060	6720	2440	9440	11280	.82	.15	2.64	4.37	4.80	7.08	.96
	4.20	1.80	4660	2090	6750	2440	9410	11250	.82	.15	2.64	4.69	5.14	7.38	.96
	4.50	1.95	4660	2430	7090	2440	9070	10910	.82	.15	2.64	5.10	5.60	7.83	.96
	4.70	2.05	4660	2140	6800	2440	9360	11200	.82	.15	2.64	5.47	5.97	8.13	.96
	4.90	2.15	4660	2150	6810	2440	9350	11190	.82	.15	2.64	5.78	6.31	8.43	.96
	5.10	2.30	4680	2200	6880	2420	9300	11120	.82	.15	2.59	6.10	6.65	8.78	1.01
	5.40	2.40	4700	2250	6950	2400	9250	11050	.82	.15	2.59	6.58	7.17	9.18	1.01
	5.70	2.65	4680	2270	6950	2420	9230	11050	.82	.15	2.59	7.03	7.65	9.73	1.01
	6.10	2.80	4700	2320	7020	2400	9180	10980	.82	.15	2.59	7.66	8.33	10.28	1.01
	6.60	3.20	4890	2370	7260	2210	9130	10740	.82	.15	2.59	8.62	9.37	11.18	1.01
6.90	3.45	4900	2400	7300	2200	9100	10700	.82	.15	2.59	9.11	9.88	11.73	1.01	

Fixed dimensions VA: 1.38 HV: ³.92 RB: .79 SB: 1.82 TB: 2.49

Chassis and Cab Weight calculated with: Standard specification items only with full tank of fuel
 Front axle can be plated to 7500 kg with appropriate tyres
THIS SPECIFICATION SHEET IS FOR PROVISIONAL PURPOSES ONLY!



- 1) CH is to top of roof hatch add 14 cm for top of air intake
- 2) Laden height over rear axle
- 3) Laden height over front axle add 5cm for 310mm high frame

Cab - Exterior

CF steel sleeper cab with hydraulic tilt mechanism
Aerodynamic design
Laminated windscreen
Standard equipment includes:
Combi-lights in bumper(fog/spots)
Tinted windscreen
Electrically heated wide angle and rear view mirrors
Kerb view mirror
Manual roof hatch
Spray suppression equipment
Engine immobiliser
5 year corrosion warranty*
2 year paint warranty*
* Subject to terms and conditions

Cab - Interior

Ergonomic aesthetically designed cab interior
Digital Information Panel in English and Dutch
Night heater
Cruise control
Drivers air and co-drivers rigid seat with headrests and integral seat belts
Phone prepared
Co-drivers electrically operated window
Co-drivers electrically operated door lock
Storage on engine tunnel and behind seats
Wrap round blue and black dashboard
24/12 volt converter of 10 Amp capacity

Suspension

Front axle:
Steel maintenance-free parabolic springs with shock absorbers and anti-roll bar

Rear axle:
ECAS air suspension with shock absorbers and anti-roll bar

Front Axle:
DAF 152N "I" section rigid beam
Design gross 7500kg

Rear axle:
DAF 1347 single reduction drive axle
Design gross 13000kg

Wheels and Tyres

Front axle 8.25 x 22.5 10 stud wheels with 295/80R22.5 tyres with highway tread

Rear axle 8.25 x 22.5 10 stud wheels with 295/80R22.5 tyres with traction tread

Engine

DAF XEC1 12.60 litre Euro 3 UPEC electronically controlled engine

Max power 381hp (280 kW) at 1900 rpm

Max torque 1600Nm at 1000-1500 rpm

Gearbox

ZF 16S181
16 speed gearbox with range change and splitter

1st 16.41:1 Top 1.00:1 Reverse 15.36:1

Clutch

Single plate clutch with extended life time and wear indicator

Performance

	Rear axle ratio	Governed engine speed	Max geared speed	Max. restart gradient
40 tonnes	3.07:1	1900	75	30%+*
	3.31:1	1900	68	30%+*

*Gradeability may be limited by tyre adhesion.

Brake System

DAF disc brakes all round controlled electronically (EBS and ABS) automatic adjustment. Exhaust brake

Frame

Completely flat topped frame of riveted and bolted construction
Chassis member dimensions 260mm x 75mm x 7mm 4.0m - 4.9m wheelbases
Chassis member dimensions 310mm x 75mm x 7mm 5.1m - 6.9m wheelbases
Bumper: steel construction
Front towing facility: chassis located x 2

Steering

Hydraulic power assisted

Turning circle (kerb to kerb)			
4.00m WB	13.90m	5.40m WB	17.55m
4.20m WB	14.40m	5.70m WB	18.30m
4.50m WB	15.20m	6.10m WB	19.35m
4.70m WB	15.70m	6.60m WB	20.65m
4.90m WB	16.21m	6.90m WB	21.45m
5.10m WB	16.75m		

Electrical Equipment

Fully coded 24 volt CAN based system and hard wiring
35/80 amp alternator
2 x 175 Ah batteries (2 x 140 Ah if no night heater fitted)
Rear light cluster includes:
rearlights, stop lights, indicators, reverse and fog lights, reflectors, end outline markers and side marker lights

General Equipment

Single 430 litre steel fuel tank
Lockable fuel cap
Silver wheels
Cab tilt bar and wheelbrace
Drawbar connections

Optional Equipment

Thatcham immobiliser H1 or H2
Rear and side windows
Corner air deflectors
Servoshift
Air/luxury/super luxury seats
Audio equipment
Dual electric window winders
Central door locking
Wooden facia
Air conditioning
Aluminium wheels
Stud protection rings
Various fuel tanks
Various batteries

Space cab:

Appointment as per sleeper cab but includes: overhead storage and increased underbunk storage, smoked sun visor and electric roof hatch

Day cab:

excludes night heater, includes storage behind seats x 2

The availability and specification of this vehicle may differ per country.
For further information please contact the DAF organisation.

Subject to modification without prior notice