



# FA CF75 SERIES

## 4 X 2 RIGID

**Engine:** 250\*/310hp  
**PE 9.2 litre**  
**Tyres:** 295/80R22.5  
**G.V.W. GB:** 18 tonnes  
**Plated Front:** 7100 kg  
**Plated Rear:** 11500 kg  
**G.C.M. GB:** 21.5/40 tonnes\*



	Wheelbase - AE		Chassis and Cab Weights			Gross Carrying Capacity			Variable Dimensions						
	W/B	AE	Front	Rear	Total	Front	Rear	Total	AC	CB	CH	BL <sup>1</sup>	TL	HA <sup>2</sup>	
Day cab	4.00	1.70	3990	1990	5980	3110	9510	12020	.39	.16	1.86	4.87	5.27	7.08	.96
	4.20	1.80	3990	2000	5990	3110	9500	12010	.39	.16	1.86	5.17	5.59	7.38	.96
	4.50	1.95	3990	2020	6010	3110	9480	11990	.39	.16	1.86	5.61	6.06	7.83	.96
	4.70	2.05	3990	2050	6040	3110	9450	11960	.39	.16	1.86	5.90	6.38	8.13	.96
	4.90	2.15	3980	2060	6040	3120	9440	11960	.39	.16	1.86	6.19	6.69	8.43	.96
	5.10	2.30	3990	2110	6100	3110	9390	11900	.39	.16	1.81	6.49	7.00	8.78	1.01
	5.40	2.40	4010	2140	6150	3090	9360	11850	.39	.16	1.81	6.94	7.49	9.18	1.01
	5.70	2.65	4010	2190	6200	3090	9310	11800	.39	.16	1.81	7.37	7.96	9.73	1.01
	6.10	2.80	4020	2230	6250	3080	9270	11750	.39	.16	1.81	7.96	8.59	10.28	1.01
	6.60	3.20	4210	2270	6480	2890	9230	11520	.39	.16	1.81	8.86	9.55	11.18	1.01
6.90	3.45	4220	2300	6520	2880	9200	11480	.39	.16	1.81	9.31	10.04	11.73	1.01	
Sleeper Cab	4.00	1.70	4130	1990	6120	2970	9510	11880	.82	.15	1.86	4.10	4.51	7.08	.96
	4.20	1.80	4130	2000	6130	2970	9500	11870	.82	.15	1.86	4.40	4.83	7.38	.96
	4.50	1.95	4130	2020	6150	2970	9480	11850	.82	.15	1.86	4.85	5.31	7.83	.96
	4.70	2.05	4130	2050	6180	2970	9450	11820	.82	.15	1.86	5.15	5.63	8.13	.96
	4.90	2.15	4120	2060	6180	2980	9440	11820	.82	.15	1.86	5.44	5.94	8.43	.96
	5.10	2.30	4130	2110	6240	2970	9390	11760	.82	.15	1.81	5.74	6.26	8.78	1.01
	5.40	2.40	4150	2140	6290	2950	9360	11710	.82	.15	1.81	6.19	6.75	9.18	1.01
	5.70	2.65	4150	2190	6340	2950	9310	11660	.82	.15	1.81	6.63	7.23	9.73	1.01
	6.10	2.80	4160	2230	6390	2940	9270	11610	.82	.15	1.81	7.23	7.87	10.28	1.01
	6.60	3.20	4350	2270	6620	2750	9230	11380	.82	.15	1.81	8.14	8.84	11.18	1.01
6.90	3.45	4360	2300	6660	2740	9200	11340	.82	.15	1.81	8.60	9.34	11.73	1.01	

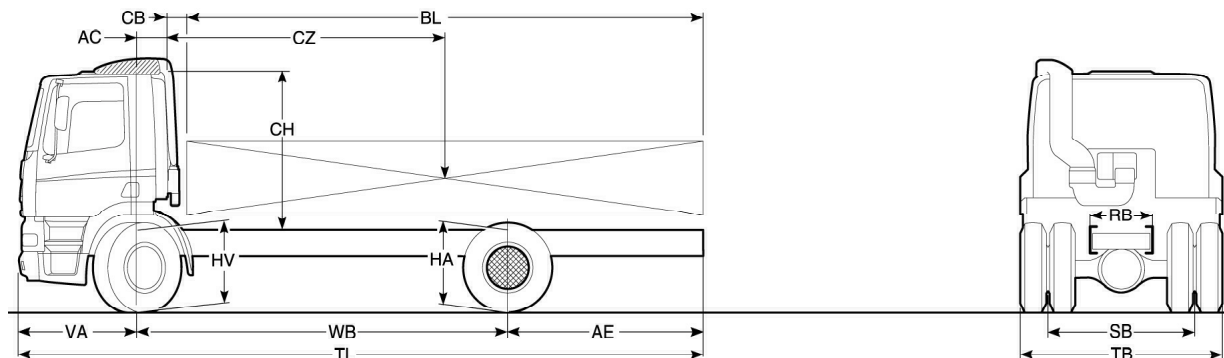
Fixed dimensions VA: 1.38 HV: <sup>3</sup>.92 RB: .79 SB: 1.82 TB: 2.49

Chassis and Cab Weight calculated with: Standard specification items only with full fuel tank.

Add 130kg for Space cab

Front axle can be plated to 7500kg with appropriate tyres. \* 35 tonnes for 250hp

THIS SPECIFICATION SHEET IS FOR PROVISIONAL PURPOSES ONLY!



- 1) Bodylengths will vary by cab type, consult TOPEC
- 2) Laden height over rear axle
- 3) Laden height over front axle add 5cm for 310mm high frame

### Cab - Exterior

CF steel day cab with hydraulic tilt mechanism  
Aerodynamic design  
Laminated windscreen  
Standard equipment includes:  
Combi-lights in bumper(fog/spots)  
Tinted glass  
Electrically heated wide angle and rear view mirrors  
Kerb view mirror  
Manual roof hatch  
Spray suppression equipment  
Engine immobiliser  
5 year corrosion warranty\*  
2 year paint warranty\*  
\* Subject to terms and conditions

### Cab - Interior

Ergonomic aesthetically designed cab interior  
Digital information Panel in English and Dutch  
Cruise control  
Driver air and co-driver rigid high back seats with integral seat belts  
Phone prepared  
Co-drivers electrically operated window  
Co-drivers electrically operated door lock  
Storage on engine tunnel and behind seats  
Wrap round blue and black dashboard  
24/12 volt converter of 10 Amp capacity

### Suspension

Front axle:  
Steel maintenance-free parabolic springs with shock absorbers and anti-roll bar  
  
Rear axle:  
ECAS air suspension with shock absorbers and anti-roll bar

Front axle:  
DAF 152N "I" section rigid beam  
Design gross 7500kg

Rear axle:  
DAF 1132 single reduction drive axle  
Design gross 11500kg

### Wheels and Tyres

Front axle 8.25 x 22.5 10 stud wheels with 295/80R22.5 tyres with highway tread  
  
Rear axle 8.25 x 22.5 10 stud wheels with 295/80R22.5 tyres with traction tread

### Engine

DAF 9.2 litre Euro 3 UPEC electronically controlled engine

Max power 249/310hp (183/228 kW) at 2200 rpm

Max torque 1050/1275Nm at 1200-1700 rpm

### Gearbox

250hp  
ZF 9S109 eight speed gearbox with crawler

Gear ratios:  
Crawler: 12.91:1  
1st 8.96:1 Top 1.00:1 Reverse 12.20:1

310hp  
ZF 8S151 eight speed gearbox  
1st 13.80:1 Top 1.00:1 Reverse 12.92:1

### Clutch

Single plate clutch with extended life time and wear indicator

### Performance

	Rear axle ratio	Governed engine speed	Max geared speed	Max restart gradient
250hp				
35.0 tonnes	3.73:1	2200	71	24%
310hp				
40.0 tonnes	3.73:1	2200	71	30%+*

\*Gradeability may be limited by tyre adhesion.

### Brake System

DAF disc brakes all round controlled electronically (EBS and ABS)automatic adjustment. Exhaust brake

### Frame

Completely flat topped frame of riveted and bolted construction

Chassis member dimensions	260mm x 75mm x 7mm	4.00-4.9m wheelbase
Chassis member dimensions	310mm x 75mm x 7mm	5.10-6.9m wheelbase
Bumper:	steel construction	
Front towing facility:	chassis located x 2	

### Steering

Hydraulic power assisted

Turning circle (kerb to kerb)			
4.00m WB	13.90m	5.40m WB	17.50m
4.20m WB	14.40m	5.70m WB	18.30m
4.50m WB	15.20m	6.10m WB	19.35m
4.70m WB	15.70m	6.60m WB	20.65m
4.90m WB	16.20m	6.90m WB	21.45m
5.10m WB	16.75m		

### Electrical Equipment

Fully coded 24 volt CAN based system and hard wiring  
35/80 amp alternator  
2 x 140 Ah batteries  
Rear light cluster includes:  
rearlights,stop lights,indicators,reverse and fog lights,reflectors,end outline markers and side marker lights

### General Equipment

Single 430 litre steel fuel tank  
Lockable fuel cap  
Silver wheels  
Cab tilt bar and wheelbrace

### Optional Equipment

Thatcham immobiliser H1 or H2  
Rear and side windows  
Corner air deflectors  
Servoshift  
Air/luxury/super luxury seats  
Audio equipment  
Dual electric window winders  
Central door locking  
Wooden facia  
Auxiliary heater - Airtronic D2  
Air conditioning  
Aluminium wheels  
Stud protection rings  
Various fuel tanks  
Various batteries

Space cab:  
Appointment as per sleeper cab but includes: over head storage and increased underbunk storage,smoked sun visor and electric roof hatch  
Sleeper cab:  
Appointment as day cab but includes raised single bunk and underbunk storage

The availability and specification of this vehicle may differ per country.  
For further information please contact the DAF organisation.

Subject to modification without prior notice