

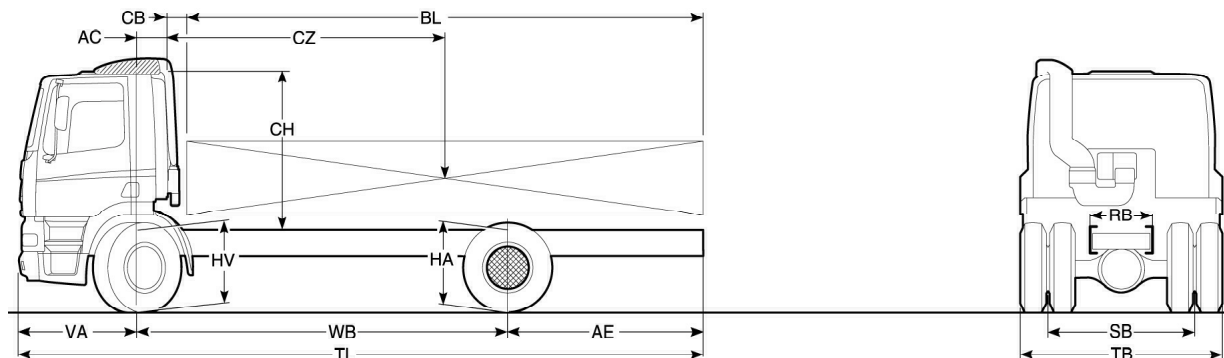
Engine: 220/250hp
CE 5.9 litre
Tyres: 295/80R22.5
G.V.W. GB: 18 tonnes
Plated Front: 7100 kg
Plated Rear: 11500 kg
G.C.M. GB: 21.5 tonnes



	Wheelbase - AE		Chassis and Cab Weights			Gross Carrying Capacity			Variable Dimensions							
	W/B	AE	Front	Rear	Total	Front	Rear	Total	AC	CB	CH ⁴	BL ⁵	TL	HA ¹	HA ²	
Day cab	4.00	1.70	3640	1900	5540	3460	9600	12460	.39	.16	1.86	4.72	5.10	7.08	1.05	.94
	4.20	1.80	3640	1910	5550	3460	9590	12450	.39	.16	1.86	5.00	5.41	7.38	1.05	.94
	4.50	1.95	3630	1940	5570	3470	9560	12430	.39	.16	1.86	5.43	5.87	7.83	1.05	.94
	4.70	2.05	3630	1960	5590	3470	9540	12410	.39	.16	1.86	5.72	6.17	8.13	1.05	.94
	4.90	2.15	3640	1980	5620	3460	9520	12380	.39	.16	1.86	6.01	6.49	8.43	1.05	.94
	5.10	2.30	3650	2030	5680	3450	9470	12320	.39	.16	1.81	6.29	6.79	8.78	1.10	.99
	5.40	2.40	3660	2060	5720	3440	9440	12280	.39	.16	1.81	6.73	7.26	9.18	1.10	.99
	5.70	2.65	3650	2100	5750	3450	9400	12250	.39	.16	1.81	7.14	7.71	9.73	1.10	.99
	6.10	2.80	3660	2140	5800	3440	9360	12200	.39	.16	1.81	7.72	8.32	10.28	1.10	.99
	6.60	3.20	3850	2170	6020	3250	9330	11980	.39	.16	1.81	8.58	9.25	11.18	1.10	.99
6.90	3.45	3850	2160	6010	3250	9340	11990	.39	.16	1.81	9.03	9.72	11.73	1.10	.99	
7.50	3.10	3820	2360	6180	3280	9140	11820	.39	.16	1.81	9.81	10.58	11.98	1.10	.99	
Sleeper Cab	4.00	1.70	3780	1900	5680	3320	9600	12320	.82	.15	1.86	3.94	4.33	7.08	1.05	.94
	4.20	1.80	3780	1910	5690	3320	9590	12310	.82	.15	1.86	4.23	4.65	7.38	1.05	.94
	4.50	1.95	3770	1940	5710	3330	9560	12290	.82	.15	1.86	4.66	5.11	7.83	1.05	.94
	4.70	2.05	3770	1960	5730	3330	9540	12270	.82	.15	1.86	4.95	5.42	8.13	1.05	.94
	4.90	2.15	3780	1980	5760	3320	9520	12240	.82	.15	1.86	5.25	5.73	8.43	1.05	.94
	5.10	2.30	3790	2030	5820	3310	9470	12180	.82	.15	1.81	5.54	6.04	8.78	1.10	.99
	5.40	2.40	3800	2060	5860	3300	9440	12140	.82	.15	1.81	5.98	6.51	9.18	1.10	.99
	5.70	2.65	3790	2100	5890	3310	9400	12110	.82	.15	1.81	6.40	6.97	9.73	1.10	.99
	6.10	2.80	3800	2140	5940	3300	9360	12060	.82	.15	1.81	6.98	7.59	10.28	1.10	.99
	6.60	3.20	3990	2170	6160	3110	9330	11840	.82	.15	1.81	7.86	8.53	11.18	1.10	.99
6.90	3.45	3990	2160	6150	3110	9340	11850	.82	.15	1.81	8.31	9.01	11.73	1.10	.99	
7.50	3.10	3960	2360	6320	3140	9140	11680	.82	.15	1.81	9.10	9.88	11.98	1.10	.99	

Fixed dimensions VA: 1.38 HV: ³.92 RB: .79 SB: 1.82 TB: 2.49

Chassis and Cab Weight calculated with: Standard specification items only with full tank of fuel
 Front axle can be plated to 7500kg with appropriate tyres. FOR TIPPER/SKIP OPERATIONS THE 9 SPEED 6309 GEARBOX MAYBE REQUIRED,
 PLEASE CONTACT SALES ENGINEERING.
 THIS SPECIFICATION SHEET IS FOR PROVISIONAL PURPOSES ONLY!



- 1) Unladen height over rear axle
- 2) Laden height over rear axle
- 3) Laden height over front axle (for chassis depth 310mm +50mm)

- 4) CH is to top of roof, add 14cm Day/Sleeper for air intake and 68cm for Space cab
- 5) Bodylengths shown are a guide, consult TOPEC for specific calculations

Cab - Exterior

CF steel day cab with hydraulic tilt mechanism
Aerodynamic design
Laminated windscreen
Standard equipment includes:
Combi-lights in bumper(fog/spots)
Tinted glass
Electrically heated wide angle and rear view mirrors
Kerb view mirror
Manual roof hatch
Spray suppression equipment
Engine immobiliser
5 year corrosion warranty*
2 year paint warranty*
* Subject to terms and conditions

Cab - Interior

Ergonomic aesthetically designed cab interior
Cruise control
Driver and co-driver high back rigid seats with integral seat belts
Phone prepared
Co-drivers electrically operated window
Co-drivers electrically operated door lock
Storage on engine tunnel and behind seats
Wrap round blue and black dashboard
Multi-functional Digital Information Panel (DIP)
24/12 volt converter of 10 Amp capacity

Suspension

Front axle:
Steel maintenance-free parabolic springs with shock absorbers and anti-roll bar

Rear axle:
Steel maintenance free parabolic springs with shock absorbers and anti-roll bar

Front axle:
DAF 152N "I" section rigid beam
Design gross 7500kg

Rear axle:
DAF 1132 single reduction drive axle
Design gross 11500kg

Wheels and Tyres

Front axle 8.25 x 22.5 10 stud wheels with 295/80R22.5 tyres with highway tread

Rear axle 8.25 x 22.5 10 stud wheels with 295/80R22.5 tyres with traction tread

Engine

PACCAR 5.9 litre Euro 3
Electronically controlled engine with common rail fuel injection system
Max power 220/250hp (162kW/184kW) at 2500 rpm

Max torque 820/950Nm at 1200-1700 rpm

Gearbox

With 220hp:
Type: ZF 6S850 six speed gearbox
Gear ratios:
1st 6.72:1 Top 0.79:1 Reverse 6.03:1

With 250hp:
Type: Eaton 6309 nine speed gearbox
Gear ratios:
Crawler 12.57:1
1st 8.51:1 Top 1.00:1 Reverse 7.64:1

Clutch

Single plate clutch push type of 395mm diameter

Performance

	Rear axle ratio	Governed engine speed	Max geared geared speed	Max. restart restart gradient
220hp	5.13:1	2500	73	29%*
250hp	4.10:1	2500	72	30%+*

*Gradeability may be limited by tyre adhesion.

Brake System

DAF full air disc brakes all round including wear indicator & ABS
Exhaust brake

Frame

Completely flat topped frame of riveted and bolted construction

Chassis member dimensions	260mm x 75mm x 7mm	3.8-4.9m wheelbase
Chassis member dimensions	310mm x 75mm x 7mm	5.1-7.5m wheelbase
Chassis width rear:	790mm	
Bumper:	steel construction	
Front towing facility:	chassis located x 2	

Steering

Hydraulic power assisted

Turning circle (kerb to kerb)

4.00m WB	-	13.90m	5.40m WB	-	17.50m
4.20m WB	-	14.40m	5.70m WB	-	18.30m
4.50m WB	-	15.20m	6.10m WB	-	19.35m
4.70m WB	-	15.70m	6.60m WB	-	20.65m
4.90m WB	-	16.21m	6.90m WB	-	21.45m
5.10m WB	-	16.75m	7.50m WB	-	23.00m

Electrical Equipment

Fully coded 24 volt CAN based system and hard wiring
80 amp alternator
2 x 140 Ah batteries
Rear light cluster includes:
rear lights, stop lights, indicators, reverse and fog lights, reflectors and end outline markers

General Equipment

Single 430 litre steel fuel tank
Lockable fuel cap
Silver wheels
Cab tilt bar and wheelbrace

Optional Equipment

Thatcham immobiliser H1 or H2
Rear and side windows
Corner air deflectors
Air/luxury/super luxury seats
Audio equipment
Wooden fascia
24/12 volt converter - 20Amp
Auxiliary heater - Airtronic D2
Air conditioning
Diff lock
ECAS rear air suspension
Aluminium wheels
Stud protection rings
Various fuel tanks
Drawbar option

Sleeper cab
Appointment as per day cab but includes: single bunk and under bunk storage
Space cab
As per sleeper cab but includes overhead storage and incremental underbunk storage, smoked sun visor and electric roof hatch

The availability and specification of this vehicle may differ per country.
For further information please contact the DAF organisation.

Subject to modification without prior notice